



Why is a Carver Bimini Top the Best Top for Your Boat?



Canvas is Custom-Fit to Frame



Stainless Steel Snap Hooks



High-Grade Domestic Nylon Fittings



Riveted Outside Eye Ends on Main Bow



Stainless Steel Adjuster Buckles



Double-Walled Main Bow



Stainless Steel Eye Straps



Stainless Steel Fasteners

Stainless Steel Frames & Stainless Steel Fittings Upgrades Also Available!

10-Year Warranty on All Sunbrella Tops!

24 Stock Colors Available!

Non-Stock Colors Available Upon Request for an Additional Fee.



Carver by Covercraft Industries, LLC

212 N. Lyles Ave., Landrum, SC 29356

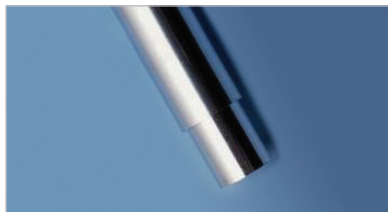
More Information at CarverCovers.com
or call (888) 48-COVER.

The Best Covers Under the Sun™



What Makes a Carver Bimini Top Better?

Important Features to Consider Before Making a Purchase



We use only 7/8" heavy-walled, cold drawn anodized aluminum tubing. Each main bow is reinforced with 3/4" aluminum tubing for additional strength and durability.



Only the highest grade domestic nylon fittings are used on our tops.



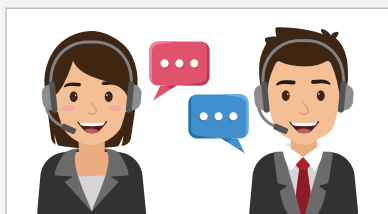
The outside eye ends are riveted on the main bow to provide greater stability and security at these key stress points.



Our eye straps and all assembly fasteners are stainless steel. Never buy a top with cheap, plastic eye straps to secure your top to the boat!



We insist on stainless steel snap hooks and stainless steel adjuster buckles for our hold-down straps. The hold-down straps attach to the eye straps and bear an immense load. This is a critical stress point that should never be compromised by purchasing a top with plastic or wire snap hooks!



Customer Service. Our customer service is second-to-none. When you call Carver, you will reach a live person, not a recording. Our customer service representatives are specially trained to answer all of your questions and assist you with any issues you may have.